

How to clean...

nexusTM 210/310

CLEANING A
GRAVITY
FED
SYSTEM

ON A GRAVITY FED SYSTEM

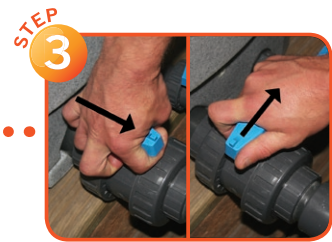
Follow these instructions if a bottom drain feed pipe (4"/110mm) **delivers** water to your Nexus 210 or 310.



Turn the circulation pump off.
Wait for 1 minute.



Insert the slide plate into inlet.



Open the larger waste valve for 2 seconds and then close immediately.



Open the air valve to the inner chamber.



Close the valve to the outer chamber.



Allow the Eazy to agitate for 5 minutes.



Open the larger waste valve and wait for the inner chamber to empty.



Close the waste valve.



Open the air valve to the outer chamber.



Close the air valve to the inner chamber.



Remove the inlet slide plate and allow the inner chamber to fill with water.



Repeat steps 2 - 11 two or three times for best results. Then switch pump back on.