

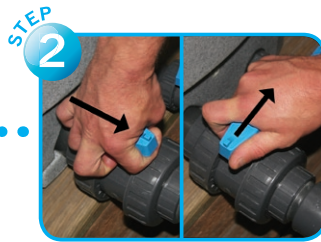
How to clean...  
**nexus**<sup>TM</sup> 210/310  
ON A PUMP FED SYSTEM



Follow these instructions if the pump situated in your pond is **pumping** water to your Nexus 210 or 310.



Close Nexus inlet valve and immediately switch pump off. Wait for 1 minute.



Open the larger waste valve for 2 seconds and then close immediately.



Open air valve to the inner chamber.



Close the valve to the outer chamber.



Allow the Eazy to agitate for 5 minutes.



Open the larger waste valve and wait for the inner chamber to empty.



Close the waste valve.



Open the air valve to the outer chamber.



Close the air valve to the inner chamber.



Open Nexus inlet valve.



Switch circulating pump back on.



Repeat this procedure 2 or 3 times for best results.